

# The Impact of Shear Forces and Surface Hydrophobicity on Coccoid Cyanobacterial Biofilm Development

Sara I. Faria<sup>1\*</sup>, Rita Teixeira-Santos<sup>1</sup>, Maria J. Romeu<sup>1</sup>, João Morais<sup>2</sup>, Vítor Vasconcelos<sup>2,3</sup> and Filipe J. M. Mergulhão<sup>1</sup>

<sup>1</sup> LEPABE - Laboratory for Process Engineering, Environment, Biotechnology and Energy, Faculty of Engineering, University of Porto, Porto, Portugal

<sup>2</sup> CIIMAR – Interdisciplinary Center of Marine and Environmental Research, University of Porto, Terminal de Cruzeiros do Porto de Leixões, Avenida General Norton de Matos, D/N, 4450-208 Matosinhos, Portugal

<sup>3</sup> FCUP – Faculty of Sciences, University of Porto, Rua do Campo Alegre, 4069-007 Porto, Portugal

\* sisf@fe.up.pt

## INTRODUCTION:

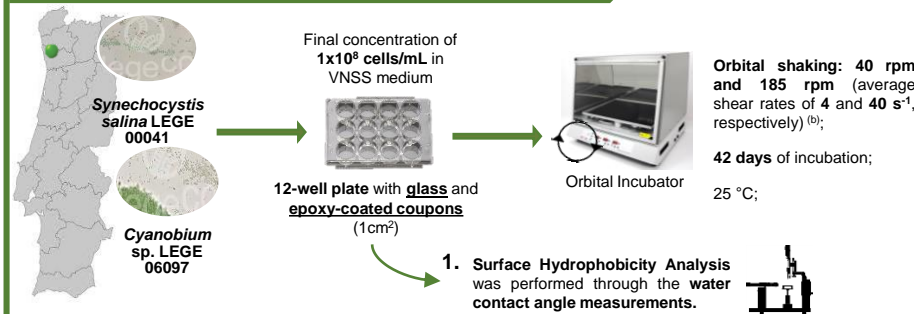
Biofilm formed on **submerged marine surfaces** by **microfoulers** organisms (e.g. **cyanobacteria**) play a critical role in the fouling process, causing **increased fuel consumption, corrosion, and high maintenance costs**. Several parameters have been indicated as **modulators of biofilm development**, including **surface hydrophobicity** and **hydrodynamic conditions**. Understanding the conditions affecting biofilm development is **crucial to develop new antifouling strategies** and **decrease the economic and environmental impact** of biofilms in **marine environment** (a).

## MAIN GOAL:

Evaluate the relative importance of **shear forces** and **surface hydrophobicity** on biofilm development by **two coccoid cyanobacteria** with different biofilm formation capacities.

## MATERIAL & METHODS:

### Cyanobacterial Strains and Biofilm Conditions



### Biofilm Analysis



## REFERENCES:

- Faria SI, Teixeira-Santos R, Romeu MJ, Morais J, et al. 2020. The relative importance of Shear Forces and Surface Hydrophobicity on Biofilm Formation by Coccoid Cyanobacteria. Polymers. 12:653.
- Romeu MJ, Alves P, Morais J, Miranda JM, et al. 2019. Biofilm formation behaviour of marine filamentous cyanobacterial strains in controlled hydrodynamic conditions. Environmental Microbiology. 21:4411–4424.

1.

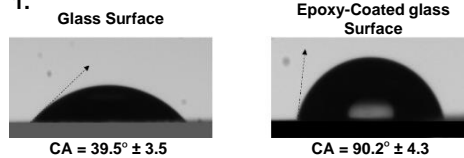


Figure 1. A representative image of water contact angle measurement. Pictures of water droplets on glass (left) and epoxy-coated (right) surfaces.

Hydrophilic Surface

Slightly hydrophobic

## RESULTS :

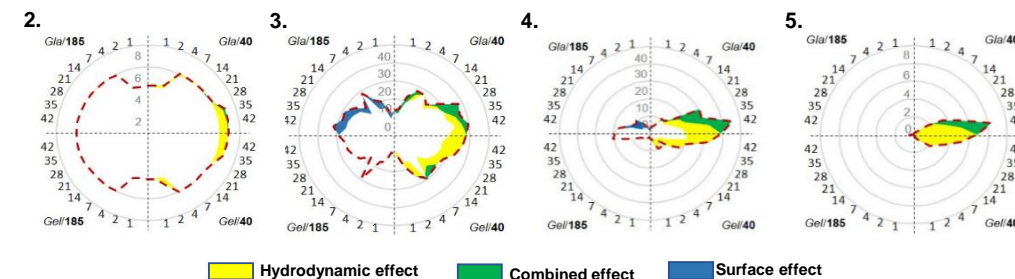


Figure 2. Radar charts representing (2.) the number of biofilm cells (Log cells.cm<sup>-2</sup>), (3.) biofilm wet weight (mg), (4.) biofilm thickness (µm), and (5.) chlorophyll a content (µg.cm<sup>-2</sup>), for *S. salina* LEGE 00041. Similar results were obtained for *Cyanobium* sp. LEGE 6097.

- ✓ The **hydrodynamic conditions** had a **high impact** on increase of **number of biofilm cells, biofilm wet weight** and **thickness**, and **chlorophyll a content (yellow area)**;
- ✓ The **combined effect** between hydrodynamic and surface hydrophobicity were also verified on the increase in **biofilm wet weight and thickness**, and **chlorophyll a content (green area)**;
- ✓ The **surface hydrophobicity** only had influence on the **biofilm wet weight and thickness at higher shear (185 rpm) (blue area)**;
- ✓ The pure effect of **hydrodynamics** was **stronger than the combined effect between surface and hydrodynamic (yellow versus green area)**.

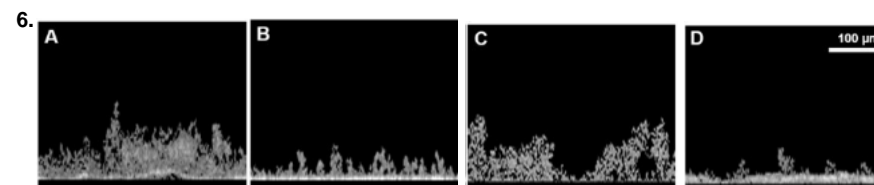


Figure 3. Representative images obtained by OCT for *S. salina* LEGE00041 biofilm (A-D), on day 42, on glass at 40 (A) and 185 rpm (B), and on epoxy-coated glass at 40 rpm (C) and 185 rpm (D).

- ✓ **Biofilms developed on glass at 40 rpm were more prominent**;
- ✓ **Three-dimensional structures** was more noticeable for biofilms formed at lower shear for both surfaces.

## CONCLUSION:

Shear forces were shown to have a profound impact on biofilm development in marine settings regardless of the fouling capacity of the existing flora and the hydrophobicity of the surface.

## ACKNOWLEDGMENTS:

This research was funded by Base Funding—UIDB/00511/2020 of the Laboratory for Process Engineering, Environment, Biotechnology, and Energy—LEPABE—funded by national funds through the FCT/MCTES (PIDDAC), “CVMAR+—Industrial Innovation and Marine Biotechnology Valorization” project, funded by INTERREG V Espanha Portugal (POCTEP) (0302\_CVMAR\_L1\_P) and UIDB/04423/2020 (CIIMAR). R.T.-S. thanks the receipt of a junior researcher fellowship from the Project PTDC/BII-BIO/29589/2017—POCI-01-0145-FEDER-029589—funded by FEDER funds through COMPETE2020—Programa Operacional Competitividade e Internacionalização (POCI) and by national funds (PIDDAC) through FCT/MCTES.